

SH171 CURVE DATA

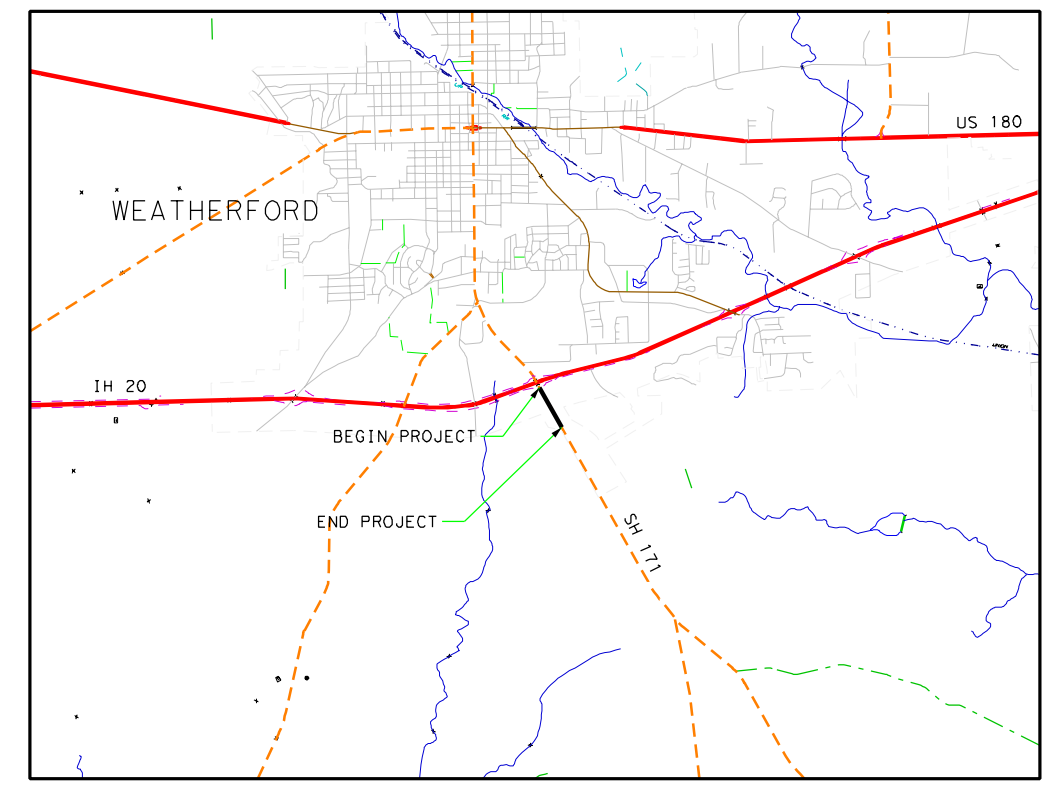
PI STATION	= 135+11.48
DELTA	= 1° 03' 02.06" (LT)
DEGREE OF CURVE	= 58.88° 00.36"
TANGENT	= 105.05
LENGTH	= 5,729.00
RADIUS	= 134+58.95
PC STATION	= 134+58.95
PT STATION	= 135+64.00

ALFORD DRIVE CURVE 1 DATA

PI STATION	= 7+16.31
DELTA	= 7° 49' 46.37" (LT)
DEGREE OF CURVE	= 14° 19' 26.20"
TANGENT	= 27.37
LENGTH	= 54.66
RADIUS	= 400.00
PC STATION	= 6+88.94
PT STATION	= 7+46.60

ALFORD DRIVE CURVE 2 DATA

PI STATION	= 7+82.39
DELTA	= 3° 45' 36.08" (RT)
DEGREE OF CURVE	= 4° 46' 28.73"
TANGENT	= 39.39
LENGTH	= 78.75
RADIUS	= 1,200.00
PC STATION	= 7+43.60
PT STATION	= 8+22.35



PRELIMINARY  
SUBJECT TO REVISION

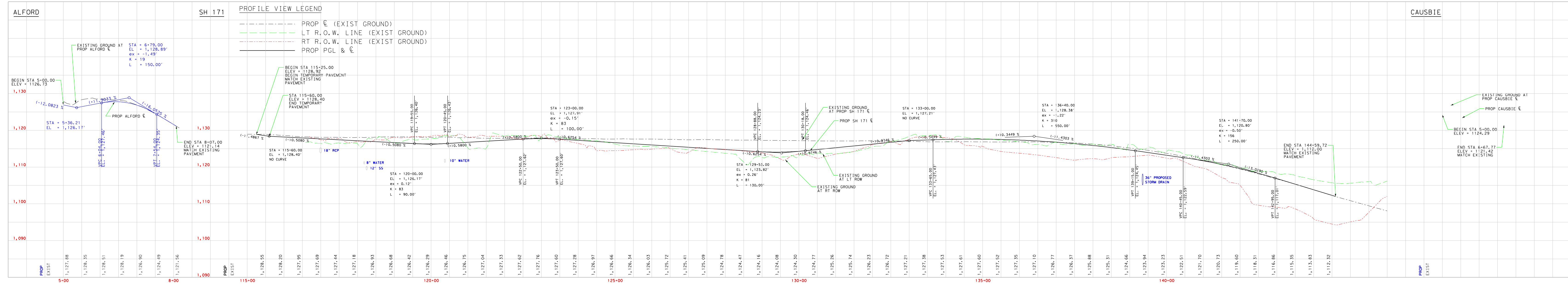
ROADWAY	DESIGN SPEED
SH 171 (IH 20 TO CAUSBIE)	45 MPH
ALFORD RD	30 MPH

DANNENBAUM ENGINEERING CORPORATION  
HOUSTON DALLAS AUSTIN  
NOT A BIDDING DOCUMENT  
THOMAS C. HARQUARDT P.E.  
1422  
TEXAS REGISTRATION NUMBER  
8/28/2007  
DATE

FUNCTIONAL CLASSIFICATION - URBAN ARTERIAL

Texas Department of Transportation  
© 2007 by TEXAS DEPARTMENT OF TRANSPORTATION  
ALL RIGHTS RESERVED  
FORT WORTH DISTRICT  
Porter County Area Office  
1427 W. Bonham, Weatherford, Texas 76086  
Texas Department of Transportation  
PARKER COUNTY  
SCHEMATIC LAYOUT  
SH 171  
FROM: IH 20 SOUTH FRONTAGE ROAD  
TO: 0.19 MILES SOUTH OF CAUSBIE ROAD  
PROJECT LENGTH = 0.556 MILES  
CSA 0365-0-038  
ROLL 1 OF 1

DANNENBAUM ENGINEERING CORPORATION  
CONSULTING ENGINEERS, 6420 CAMP BOWIE, SUITE 400, FORT WORTH, TEXAS 76107  
8/28/2007  
DATE  
1719 PARKER 103501 038



PRELIMINARY  
SUBJECT TO REVISION

ROADWAY	DESIGN SPEED
SH 171 (IH 20 TO CAUSBIE)	45 MPH
ALFORD RD	30 MPH

DANNENBAUM ENGINEERING CORPORATION  
HOUSTON DALLAS AUSTIN  
NOT A BIDDING DOCUMENT  
THOMAS C. HARQUARDT P.E.  
1422  
TEXAS REGISTRATION NUMBER  
8/28/2007  
DATE

FUNCTIONAL CLASSIFICATION - URBAN STREET

Texas Department of Transportation  
© 2007 by TEXAS DEPARTMENT OF TRANSPORTATION  
ALL RIGHTS RESERVED  
FORT WORTH DISTRICT  
Porter County Area Office  
1427 W. Bonham, Weatherford, Texas 76086  
Texas Department of Transportation  
PARKER COUNTY  
SCHEMATIC LAYOUT  
SH 171  
FROM: IH 20 SOUTH FRONTAGE ROAD  
TO: 0.19 MILES SOUTH OF CAUSBIE ROAD  
PROJECT LENGTH = 0.556 MILES  
CSA 0365-0-038  
ROLL 1 OF 1

DANNENBAUM ENGINEERING CORPORATION  
CONSULTING ENGINEERS, 6420 CAMP BOWIE, SUITE 400, FORT WORTH, TEXAS 76107  
8/28/2007  
DATE  
1719 PARKER 103501 038

